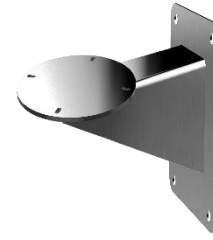


DS-1713ZJ-Y(SUS316L)



Key Feature

- 316L Stainless steel with surface spray treatment
- Applies to both indoor conditions, and outdoor conditions

Specification

Model	DS-1713ZJ-Y(SUS316L)
Weight	7.1 kg (15.65 lb.)
Appearance	Natural Stainless Steel Color
Material	Stainless steel 316L
Dimension	∅ 270 mm × 479 mm × 235 mm (∅ 10.63" × 18.86" × 9.25")
Description	Wall Mount

Available Model

防爆云台 1-壁装支架(316L)

Dimension