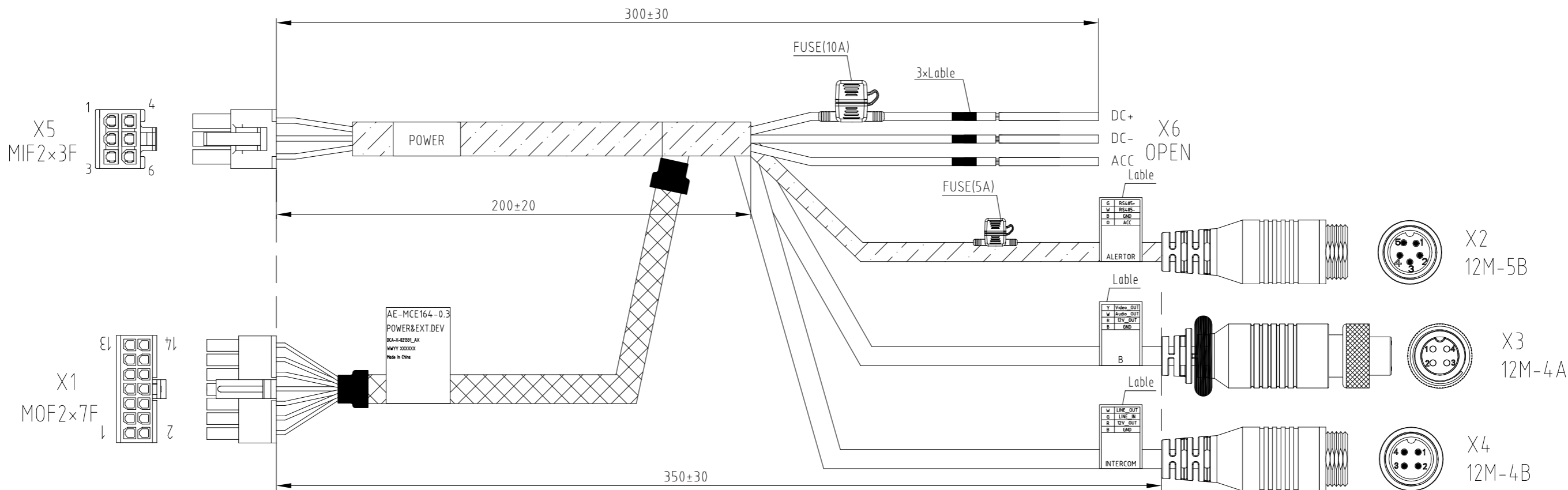


HIKVISION CONFIDENTIAL INFORMATION  
UNAUTHORIZED DIFFUSION IS PROHIBITED

SECURITY CLASSIFICATION: AA



PIN Table 1:

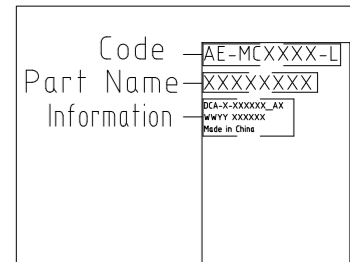
X1	Colour	X2	X5	X6	Signal	
1	G	3			RS485+	⊗
4					RS485-	
2	W	2			RS485-	⊗
3					GND	
9	B	4			GND	
	0	5	6	OPEN	ACC	5A FUSE
	R		4	OPEN	DC+	10A FUSE
			5	OPEN	DC-	
	B		1	OPEN	DC-	
			2	OPEN	DC-	
			3			

PIN Table 2:

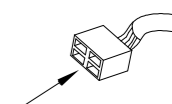
X1	Colour	X3	X4	Signal
6	Y(C)	1		Vedio_OUT
8	W	2		Audio_OUT
	W		1	LINE_OUT
10	R	3	3	12V_OUT
5	B(S+B)	4		GND
7	G		2	LINE_IN
9	B		4	GND

NOTES:

- 1.All the materials must be compliant RoHS;
- 2.Working tempature: -40~105°C;
- 3.Process conforms to the IPC620 standard 3;



LABLE



VIEW

NO.	REV	DESCRIPTION	AREA	BY	DATE
DESIGN		PART NAME: AE-MCE164-0.3 (POWER&EXT.DEV)	PART NO: 309502849	<b>HIKVISION</b> HANGZHOU HIKVISION DIGITAL TECHNOLOGY CO. LTD.	
APPROVED		DWG NO: DCA-X-021331	REV: A1		
STANDARD		MATERIAL:	WEIGHT:	GRADE:	FIRST ANGLE
MCODE		FINISH:	FIRST_USED_ON	SCALE: 1:1	SIZE: A3
					SHEET 1 OF 1

(Conform to the requirements of the RoHS).

DWG NO: A3